



ADTM
antique Decor

Decorative Ceiling Tiles





N 143 Antique Copper

Design Depth : 18 mm
Size : 800 mm
Pattern Size : 500 mm
Style : Contemporary
Installation Method : Glue Up / Drop In



N 143 Copper



N 143 Antique Gold



N 144 Antique Copper

Design Depth : 18 mm
Size : 800 mm
Pattern Size : 500 mm
Style : Contemporary
Installation Method : Glue Up



N 144 Antique Brass



N 144 Pearl White



N 145 Antique Copper

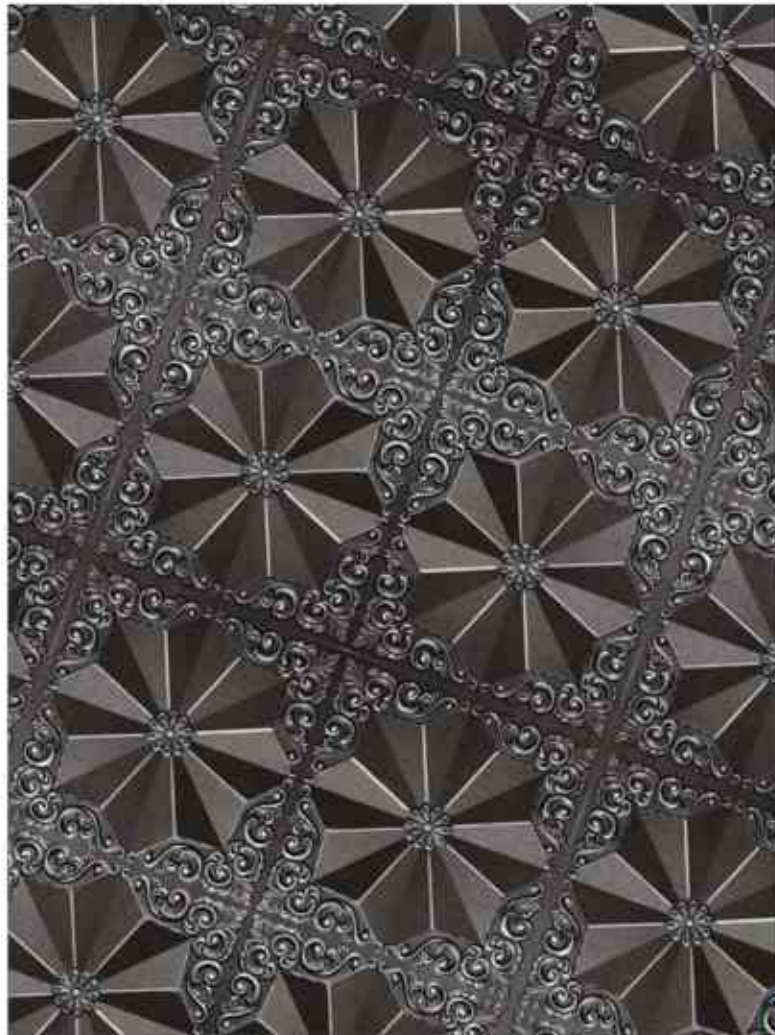
Design Depth : 18 mm
Size : 800 mm
Pattern Size : 500 mm
Style : Classic
Installation Method : Glue Up / Drop In



N 145 Antique Gold



N 145 Pearl White



N 142

AD
antique Decor



Antique Copper



Antique Silver



Pearl White



Antique Gold



Gold



Silver



Copper



Glamor White



Brass

- Design Depth : 15 mm
- Size : 603 mm
- Pattern Size : 585 mm
- Style : Contemporary
- Installation Method : Glue Up / Drop In

N 141



Antique Copper



Antique Silver



Antique Brass



Antique Gold



Gold



Silver



Copper

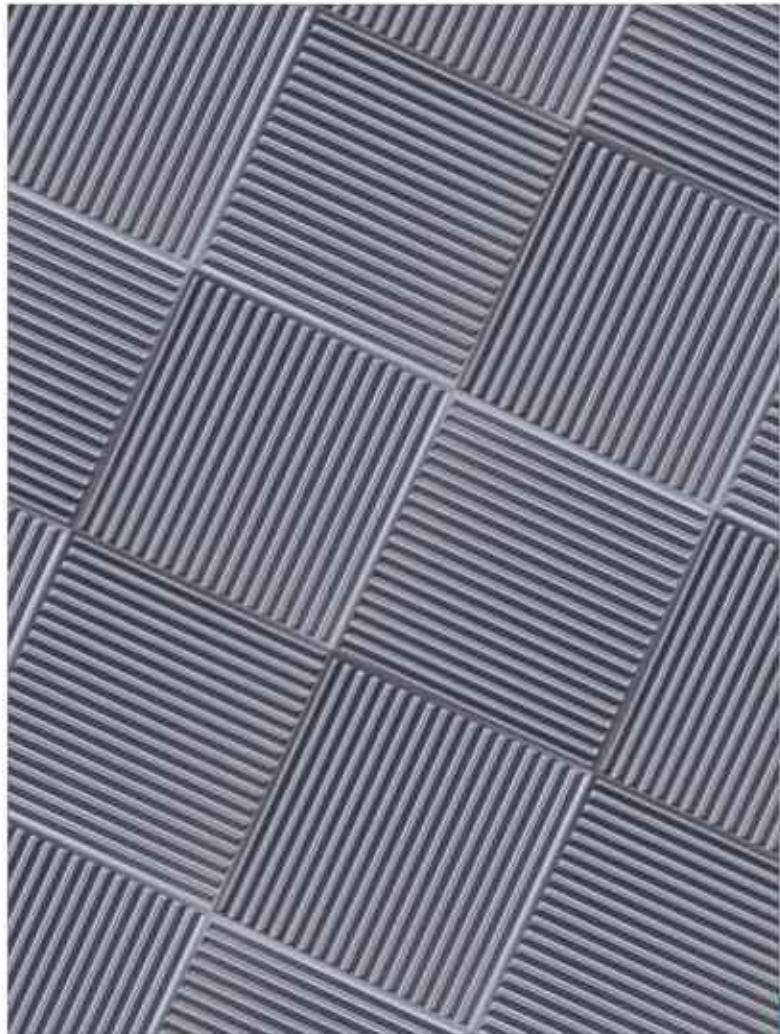


Pearl White



Brass

- Design Depth : 6 mm
- Size : 603 mm
- Pattern Size : 585 mm
- Style : Morden
- Installation Method : Glue Up / Drop in



N 134



Antique Gold



Antique Silver



Metal Corroded



Old Tin Roof



Gold



Silver



Rusty Metal



Simply Rustic



Antique Copper

Design Depth : 10 mm
 Size : 603 mm
 Pattern Size : 585 mm
 Style : Morden
 Installation Method : Drop In



N 118

AD
antique Decor



Antique Gold



Antique Silver



Pearl White



Pearl White - Gold



Gold



Silver



Brass

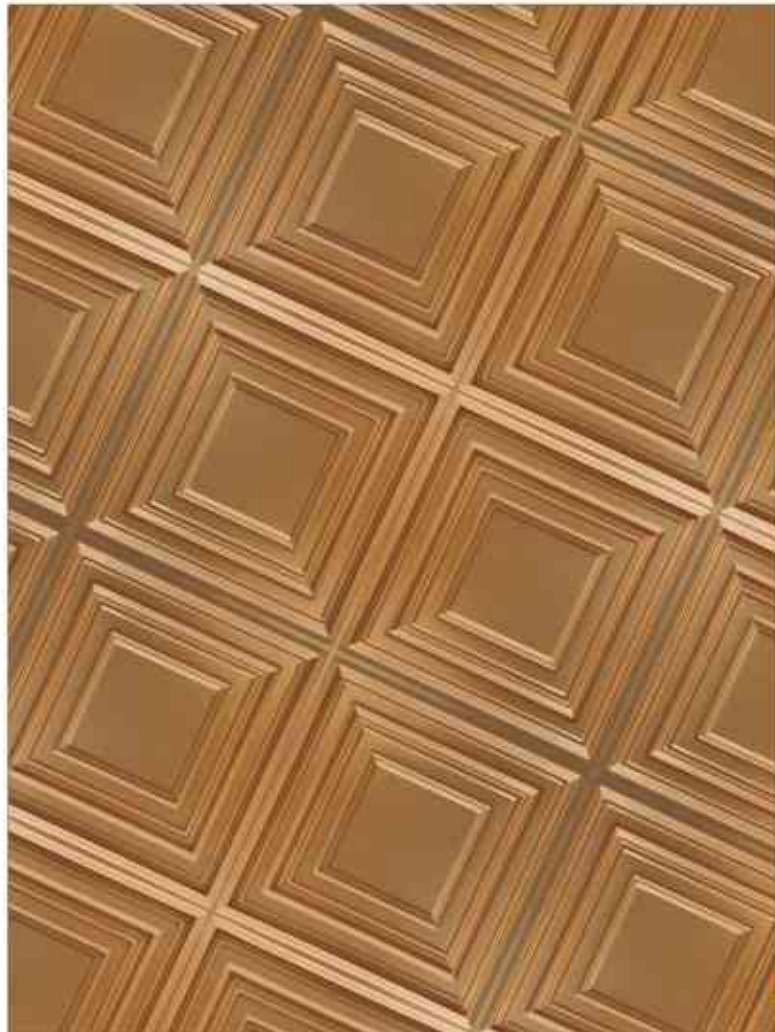


Copper



Antique Copper

Design Depth : 12 mm
 Size : 603 mm
 Pattern Size : 585 mm
 Style : Art deco
 Installation Method : Glue Up / Drop in



N 102



Antique Gold



Antique Silver



Antique Brass



Brass



Gold



Silver



Copper



Antique Copper



Pearl White

- Design Depth : 20 mm
- Size : 603 mm
- Pattern Size : 585 mm
- Style : Contemporary
- Installation Method : Glue Up / Drop In



N 105

AD
antique Decor



Antique Gold



Antique Silver



Antique Brass



Pearl White



Gold



Silver



Brass

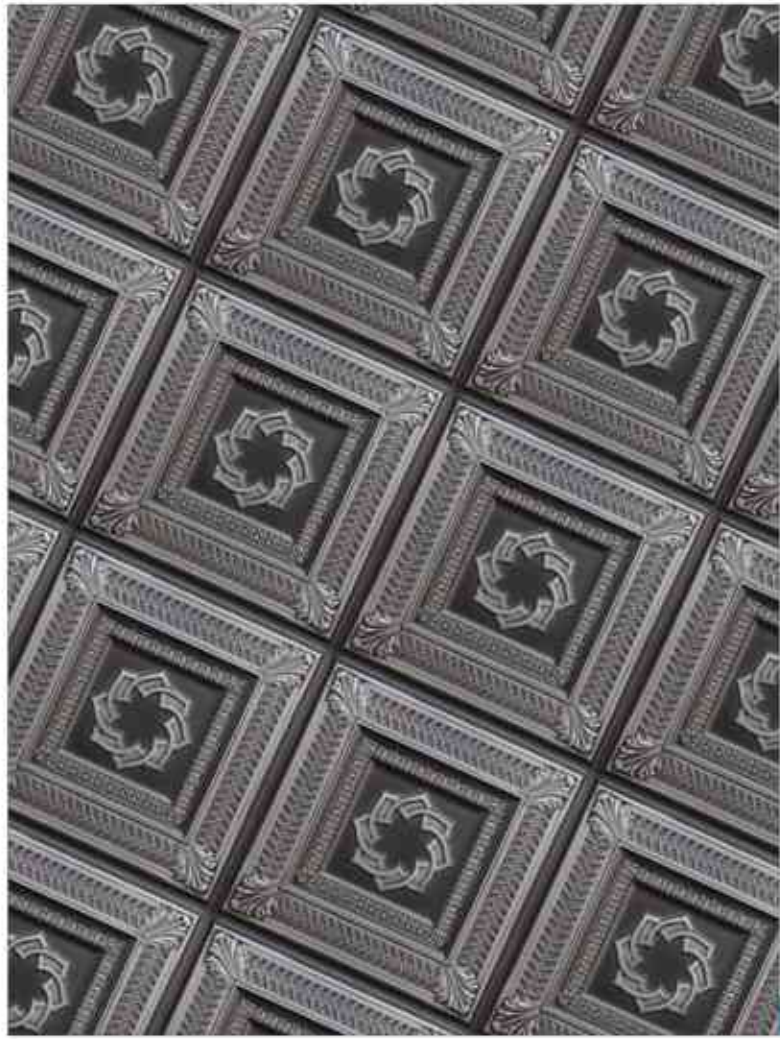


Copper



Antique Copper

Design Depth : 6 mm
 Size : 615 mm
 Pattern Size : 585 mm
 Style : Classic
 Installation Method : Glue Up



N 137



Antique Gold



Antique Silver



Antique Brass



Pearl White - Gold



Gold



Silver



Brass



Pearl White



Antique Copper

- Design Depth : 32 mm
- Size : 603 mm
- Pattern Size : 585 mm
- Style : Classic
- Installation Method : Glue Up / Drop In



N 120

AD
Antique Decor



Antique Gold



Antique Silver



Antique Brass



Pearl White



Gold



Silver



Brass



Copper



Antique Copper

Design Depth : 8 mm
 Size : 603 mm
 Pattern Size : 585 mm
 Style : Art dco
 Installation Method : Glue Up / Drop in



N 122



Antique Gold



Antique Silver



Antique Brass



Pearl White - Gold



Gold



Silver



Brass



Pearl White



Antique Copper

- Design Depth : 10 mm
- Size : 603 mm
- Pattern Size : 585 mm
- Style : Classic
- Installation Method : Glue Up / Drop In



N 113



Antique Gold



Antique Silver



Antique Brass



Pearl White - Gold



Gold



Silver



Brass



Pearl White



Antique Copper

- Design Depth : 10 mm
- Size : 603 mm
- Pattern Size : 585 mm
- Style : Victorian
- Installation Method : Glue Up / Drop in



N 121



Antique Gold



Antique Silver



Antique Brass



Pearl White - Gold



Gold



Silver



Brass



Pearl White



Antique Copper

- Design Depth : 20 mm
- Size : 603 mm
- Pattern Size : 585 mm
- Style : Victorian
- Installation Method : Glue Up / Drop In



About Us

Nova decorative Industries is manufacturing and selling Decorative ceiling tiles with the best quality and modern artistic design. We are specialized in unique & antique decorative ceiling tiles. We have a vast range of antique, classic to minimalistic, vintage to ultra-modern, simple to artistic. When it comes to design, we can confidently say we have the most unique range of ceiling tiles. We believe in customer satisfaction. We have a dedicated art designer team who love to make exclusive & customized design and color possibilities to fulfill your requirements and your special projects. Our Antique decor Ceiling tiles are suitable for all places like home, office, hotel, restaurant, club, and countless places to make more loveable and enjoyable. We are shipping our products worldwide.

Advantages

- We believe in safety first. Our Ceiling Tiles are Class A Fire Rate Tested.
- It is very easy to Install in a grid system and directly apply adhesive glue.
- It is made from eco-friendly material. It can be recycled and reuse.
- It has long-lasting use & the durability is very high.
- Cold or hot weather does not affect easily so, it is ideal for any Weather Conditions.
- It is resistant to termite, bacteria, fungus.
- Ceiling tiles are water, stain-resistant and washable.
- Tiles are easy to clean and don't need any ongoing maintenance
- All of the designs 3D embossed into the tiles to create the look and texture of real.
- Wide range of design and color combinations for selection.
- It is very lightweight so perfect for ceiling and wall.
- It is fully customizable in design, color, and size.
- It is made from PVC so will not rust.
- The thickness is 0.50mm or 0.70mm so easy to cut by scissors during installation.
- It is paintable using water-based colors.

HOW TO INSTALL GLUE UP CEILING TILES

Step-1 PREPARING THE SURFACE

*Wipe off the ceiling / surface and make it smooth and even.
Remove loose plaster, paint, wall paper etc.*

Step-2 DRAW AN ANGLE

*Draw straight lines in the corner (in width and length part)
and make a 90 degree angle, for starting point of pasting.*

Step-3 APPLY THE ADHESIVE

Step-4 PLACE AND PRESS:

*Place the sheet into the required position
(first sheet at the 90-degree point) and press firmly but gently.
Overlap the ends of the previous sheet, again using firm but gentle pressure.
The advantage of the decorative ceiling system in 24" x 24" with overlapping
edges is that it provides you with an extra and unique edge for your PVC
ceiling panels decoration due to multiple designs available in all colours.*

HOW TO INSTALL DROP IN CEILING TILES

INSTALLATION PROCESS

- You will not need to find the centre of the room when you are installing faux tin drop in ceiling tiles. This is because you can use the outlay of the existing tile system as a guide. Simply install the first tile by pushing the ends into the creases of the existing grid system. Take care not to push too hard on the tile, but just gently enough to insert it over the existing tile.
- Repeat the same process described in Step 1 until you have completed all of the whole tiles and are left with the corners.
- The 'cut-to-fit' faux tin drop in ceiling tiles may need an adhesive to hold them tightly in place. This is because they will not be held from all four corners into the existing grid system. However, if you are able to cut the tiles to ensure a tight fit between the wall, then you may just dispense the adhesive.

Grid Covers Installation

*Grid Covers used only in drop in T-grid System.
Peel off the back paper and put on a 24mm Aluminium T-Grid Channel.*