



# IMPERIAL HERRINGBONE FLOORING



**Floor-tex**<sup>®</sup>  
Adding more to life



**Floor-tex**  
IMPERIAL

**AMERICAN OAK**  
CODE : 7024  
600 x 100 x 10mm



**Floor-tex**  
IMPERIAL

**BLUE SHAPPHIRE**  
CODE : 7025  
600 x 100 x 10mm



**Floor-tex**  
IMPERIAL

**TEXAS BROWN**  
CODE : 7026  
600 x 100 x 10mm



**Floor-tex**  
IMPERIAL

**SMOKED OAK**  
CODE : 7027  
600 x 100 x 10mm

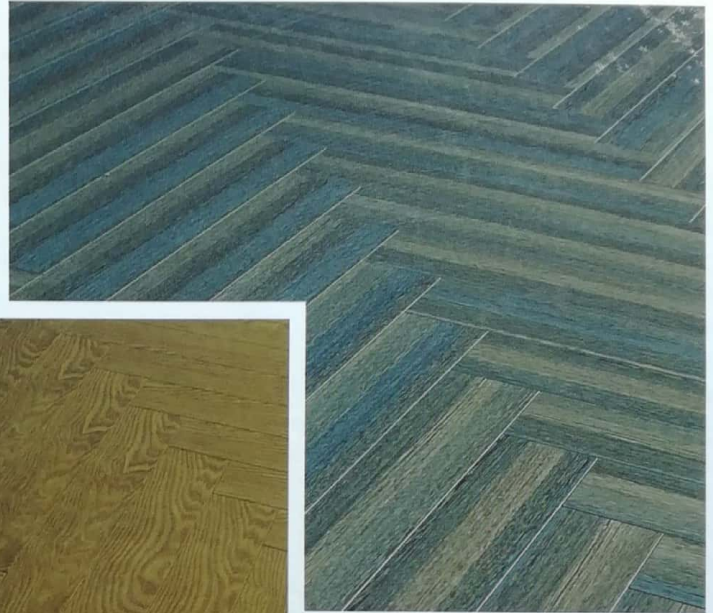
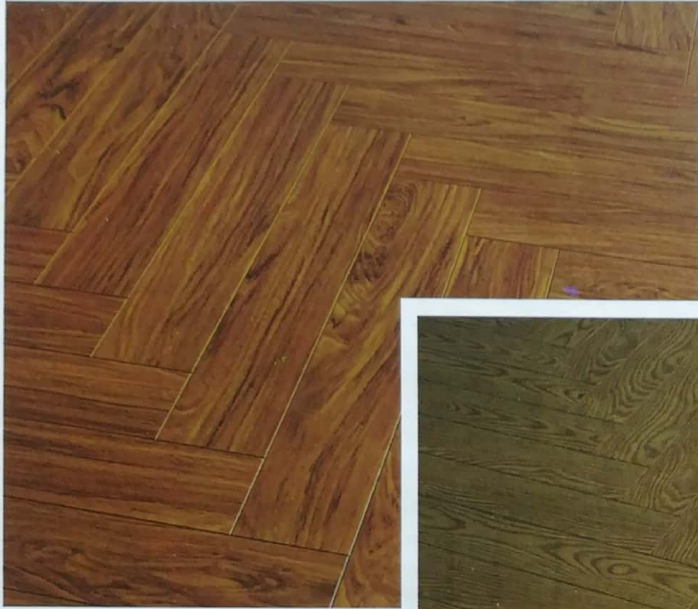


**Floor-tex**  
IMPERIAL

**LUXURY ORCHID**  
CODE : 7023  
600 x 100 x 10mm



# IMPERIAL HERRINGBONE FLOORING



Collection	<b>IMPERIAL HERRINGBONE FLOORING COLLECTION</b>
Surface Structure	Embossed Surface with Designer Wood Textures - V Groove
Overlay	Highly Resistant Surface impregnated with Melamine Resins and Aluminium Oxide
Substrate	High Density Fibre Board of E1 Standards
Balancer	Melamine impregnated paper
Abrasion Class	AC5, Class 33
Application Areas	Ideal for Heavy Residential and General Commercial Use
Installation	Arc Click System with Moisture Resistant Yellow Backing
Dimensions	600 x 100 x 10mm
Boards/Box	24 Pcs.
Area/Box	1.44 sq.mtrs per box/15.49 sq.ft per box.



Scratching Resistant



Cigarette burn Resistant



Impact Resistant



Domestic Chemicals Resistant



Fade Resistant



Stain Resistant



Friendly to Allergic



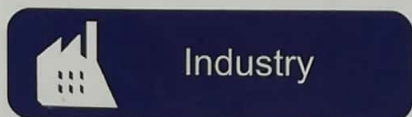
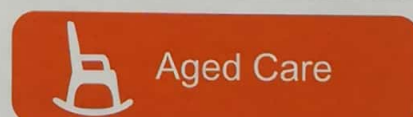
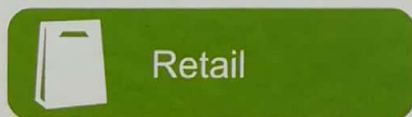
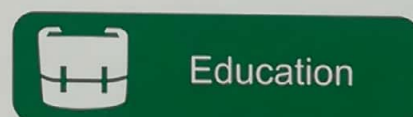
Easy Cleaning



Soft Rolls Advisable



Water Underfloor Heating Suitable



Authorised Dealer :